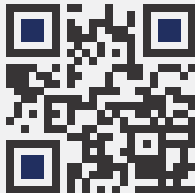


ATILLA

CONSTRUCTION
FITOUT & FF&E
SOLUTIONS



CONSTRUCTION
FITOUT& FF&E
SOLUTIONS

HEADQUARTER
Wollzeile 11/2. OG, 1010
Vienna, Austria

T. +43 720 143 143
M. +43 699 13 067 067
E. contact@atilla.co
R. sa@atillagroup.at
U. atilla.co

BOSNIA AND HERZEGOVINA
Kasindolska 141 Ilidža 71210
Sarajevo, Bosnia and Herzegovina

T. +387 33 74 11 11
E. bh@atilla.co
U. atilla.co

MONTENEGRO
Vladimira Rolovića Br. 6, Bar
Crna Gora (Montenegro)

T. +387 33 74 11 11
E. mne@atilla.co
U. atilla.co

TURKIYE
Ahlatlıbel Mah. 1902. Sk. No:43
Çankaya 06805 Ankara, Türkiye

T. +90 850 307 51 35
E. a@atillagroup.com.tr
U. atillagroup.com.tr

CYPRUS
Uğur Mumcu Blv. 14/4 Karakum
99320 Girne (Kyrenia)
Turkish Republic of Northern Cyprus

T. +90 392 815 50 08
E. cy@atilla.co
U. atilla.co

PARAGUAY
Ruta Transchaco esquina
Cristobal Colon
Mariano Roque Alonso
Asuncion, CP2040 Paraguay

T. +595 981 85 81 82
E. info@acon.com.py
U. acon.com.py

INDEX

Chairman’s Statement	5
CEO’s Statement	7
CTO’s Statement	9
Atila Group on Map	10-11
Company Profile	12-13
Our Philosophy	14
History	15
Construction	17
Construction Techniques	19
Architectural & Engineering	21
REFERENCES	
Residential	23-67
Hospitality	69-85
Commercial	87-95
Education and Sport Halls	97-105
Harbors, Yacht & Harbors, Fisheries	107-115
Other	117-121

ATILLA

ACON

GROUP OF COMPANIES



Chairman's Statement

Focusing our corporate ideals on "Creating a better environment for the workplace", we continue our business activities with the core strength of our construction and engineering services, and try to contribute and develop by developing a safe and comfortable infrastructure and living environment. as a permanent business enterprise. "Our business is design and construction. Our strength is our team.

Our motivation is to be proud of our organization and what we have accomplished. Integrity is our foundation, quality and fairness goals, and caring for the environment is our main goal. "Commitment to excellence and customer satisfaction form the basis of our philosophy.

Our theme is quality, integrity, time, efficiency and safety. In order to realize these principles, we are committed to fulfilling our corporate responsibilities, including increasing our business ethics awareness and compliance, and aim to be a reliable and reliable company worldwide. We believe that only superior craftsmanship, superior quality control, effective safety methods and continuous improvement of our management profile and professional skills can deliver the desired results and our goal of customer satisfaction.

M. Attila Atilla
Chairman of Atilla and Acon Group
CEO of Acon REIT

ATILLA



CEO's Statement

We, focus our corporate ideals "To create a better environment for the where we are working," pursue our business activities with our core strengths of construction and engineering services, and strive to contribute by developing a safe and comfortable infrastructure and living environment and to prosper as a business enterprise continuously.

"Our business is design and construction. Our strength is our team. Our motivation is our pride in our organization and what it has accomplished. Integrity is our foundation, quality and fairness are our goals and caring environment is our core objective.

"Commitment to excellence and client satisfaction form the basis of our philosophy. Our theme is quality, integrity, time, efficiency and safety.

To achieve these principles, we are committed to fulfill our corporate responsibilities, including enhancing our awareness of and conformity with business ethics, and aim to be a reliable and trustworthy company globally.

We believe that only outstanding workmanship, superior quality control, effective safety methods and continuous development of our management profile and professional skills can bring about the desired results and our goal of customer satisfaction.

Akin Atilla
CEO and MOB of Atilla Group
COO of Acon Group

ATILLA

CONSTRUCTION



CTO's Statement

The need for construction that grows every day,

Rapidly advancing construction technologies,

With the developing world, the increase in the positive demand of customers for quality and optimum benefit.

While all of these are advancing at a staggering pace, we continue our efforts to become an important actor that meets the needs of the market.

Precast structures, light and heavy steel solutions, tunnel formwork systems and solutions are the construction techniques we use according to needs.

Balancing time, cost, quality in order to meet housing and building demands and offering a peaceful life to the end user... This is our goal.

Salim Arab

CTO and Austria Director of Atilla Construction

ATILLA GROUP

EUROPE

Austria
Bosnia and Herzegovina
Bulgaria
Croatia
Cyprus
Germany
Hungary
Montenegro
North Macedonia
Romania
Serbia
Slovenia
Sweden
Turkey
Ukraine
United Kingdom

AFRICA

Algeria
Angola
Burkina Faso
Egypt
Gabon
Ghana
Ivory Coast (Côte d'Ivoire)
Libya
Mauritania
Senegal
South Sudan
Sudan
Tanzania
Togo
Tunisia

ASIA

Azerbaijan
Kazakhstan
Kyrgyzstan
Tajikistan
Uzbekistan
Russia

MIDDLE EAST

Iran
Iraq
Oman
Qatar
Saudi Arabia
United Arab Emirates

SOUTH AMERICA

Dominica
Paraguay
Peru

- Headquarter
- Office/Branch
- Project/Service provided countries

COMPANY PROFILE

Atilla Group started its activities in 1976 under the name Atilla Trade manufacturing building materials.

Under the umbrella term Atilla Group, it provides services in the fields of design, architectural design and management, construction contracting, steel structure manufacturing, prefabric housing, construction buildings manufacturing as well as manufacturing and application of facade materials and accessories.

Atilla Group also provides service in energy, healthcare, medical, food and beverage, insulation materials production, investment and project development sectors.

Atilla Group operates through its offices in Austria, Bosnia and Herzegovina, Turkiye, Montenegro and Paraguay.



OUR PHILOSOPHY

Reliability, quality, product variety, original and unique designs, up-to-date techniques, budget-oriented work.

The basic principles of Atilla Group; Compliance with international standards, following and implementing technological innovations, effective project and resource management, quality but cost-effective service, reliability, practical and modern solutions to create contemporary and unique living spaces.

In line with these principles, we feel the need to share our experiences with our stakeholders and customers within the framework of our contractual obligations and ethical rules. It has positioned the customer at the focal point of Atilla Group. We aim to provide service according to international standards and to keep our customers' satisfaction at the highest level with the right focus.

HISTORY

Atilla Group started its activities in 1976 under the name Atilla Trade manufacturing building materials.

Atilla Group, in which Ziya Atilla and his family laid the foundations in 1976. Today, it has served in more than 40 countries, has completed more than 300 projects and serves in 6 different sectors in many countries of the world.

Building blocks of the company; is built on trust, quality, customer-oriented service and aesthetics.

As a family company, Atilla Group is managed and serves professionally and institutionally.

SINCE	COUNTRY	SECTORS	COMPLETED PROJECTS
1976	40+	6	300+



CONSTRUCTION

Atila Group's construction company which provides construction services in Bosnia and Herzegovina as well as in the entire Balkans region, Austria, Central Europe, Africa and Gulf Region.

Atila Construction is an Atila Group company operating in the field of construction and has conducted projects in the Balkans, Central and Eastern Europe and Africa.

Reinforced concrete constructions, light and heavy steel constructions, exterior coating systems. It carries out turnkey construction projects from soil with expert teams.

Atila Construction has completed many projects such as housing, high-rise buildings, industrial buildings, sports halls, infrastructure works, road works.

CONSTRUCTION SERVICES

- Residential areas, collective residential areas,
- Offices, commercial areas
- Public institutions and weekend resorts
- Factories, hangars, warehouses
- Sports halls and hotels
- Infrastructure construction
- Landscaping
- Ports design and construction
- All inclusive project designing and management

CONSTRUCTION TECHNIQUES

Heavy Steel

Taking into consideration each sector's unique "specific" conditions, as well as ensuring that all units and details are professionally applied, we produce heavy steel structures including factories, hangars, warehouses, sports halls and hotel complexes.

We work on the principle of maximum efficiency in order to produce economic, fast, secure and robust constructions.

Light Steel

Under the umbrella term "light steel structures" we offer construction of residences, offices, public buildings, resorts and public housing projects.

Whether you need a single building or a building complex projecting functionality and aesthetic integrity, we are always a safe choice and we provide delivery on time.

Concrete Structures

Whether you need coarse or fine concrete structures for your house, villa, office, businesses place, school, sports facility or any other kind of small or medium-sized project, we are the right solution for you.

Precast Systems

Precast concrete is a construction product produced by casting concrete in a reusable mold or "form" which is then cured in a controlled environment, transported to the construction site and lifted into place ("tilt up"). In contrast, standard concrete is poured into site-specific forms and cured on site. Precast stone is distinguished from precast concrete using a fine aggregate in the mixture, so the final product approaches the appearance of naturally occurring rock or stone. More recently expanded polystyrene is being used as the cores to precast wall panels. This is lightweight and has better thermal insulation.

Precast is used within exterior and interior walls. By producing precast concrete in a controlled environment (typically referred to as a precast plant), the precast concrete is afforded the opportunity to properly cure and be closely monitored by plant employees. Using a precast concrete system offers many potential advantages over onsite casting. Precast concrete production can be performed on ground level, which helps with safety throughout a project. There is greater control over material quality and workmanship in a precast plant compared to a construction site. The forms used in a precast plant can be reused hundreds to thousands of times before they have to be replaced, often making it cheaper than onsite casting when looking at the cost per unit of formwork.

ATILLA CONSTRUCTION

Atilla Construction KG Austria
Atilla Construction SARL Algeria
Atilla Building SRL Romania
Atilla Yapı Türkiye

ARCHITECTURAL & ENGINEERING

Atilla Group has signed a number of architectural and engineering projects in the Balkans, Central and Eastern Europe, Africa, Turkey and the Gulf States. Atilla Group has expert staff and teams in the fields of architectural projecting and interior design, visual 3D design, engineering services, topography services, follow-up of formal procedures, implementation and construction sites inspections.

Architectural Services

- Architectural projecting
- Interior architecture
- Landscape architecture
- 3D design and illustration
- Sketching
- Model making
- Controlling and supervision
- Quality control
- Project promotion and marketing

Engineering Services

- Electrical
- Mechanics
- Static
- Infrastructure
- Topography and mapping
- Controlling and supervision

Atilla Group adopts design concepts based on creativity and quality. We take excellent care of our work and crew aiming at developing every field under the leadership of an experienced team.



PJ Acon Design and Management Co.



REFERENCES
RESIDENTIAL

RESIDENTIAL - MIXED-USE

MOJAN CITY

FITOUT | FF&E



RESIDENTIAL - MIXED-USE

MOJAN CITY

FITOUT | FF&E



Mojan City

Mixed-use project; Apartments, Shopping Malls (closed and open), Hotels, Villas, Facilities etc.
Abha, Kingdom of Saudi Arabia
1.059.125 m² (built-up), 700.000 m² (land)



RESIDENTIAL - MIXED-USE

MOJAN CITY

FITOUT | FF&E



RESIDENTIAL - MIXED-USE

MERİÇ RESIDENCE

CONSTRUCTION | FITOUT | FF&E



Meriç Residence

525 Apartments, Stores, Apart Hotel
Lefkoşa (Nicosia), North Cyprus
68.982,97 m²



RESIDENTIAL

EAGLE LODGE

CONSTRUCTION | FITOUT | FF&E



Eagle Lodge

Luxury Villas
Girne (Kyrenia), North Cyprus
3.635 m²



RESIDENTIAL - MIXED-USE

BALIKESIR RESIDENCE

FITOUT | FF&E



Balıkesir Residence

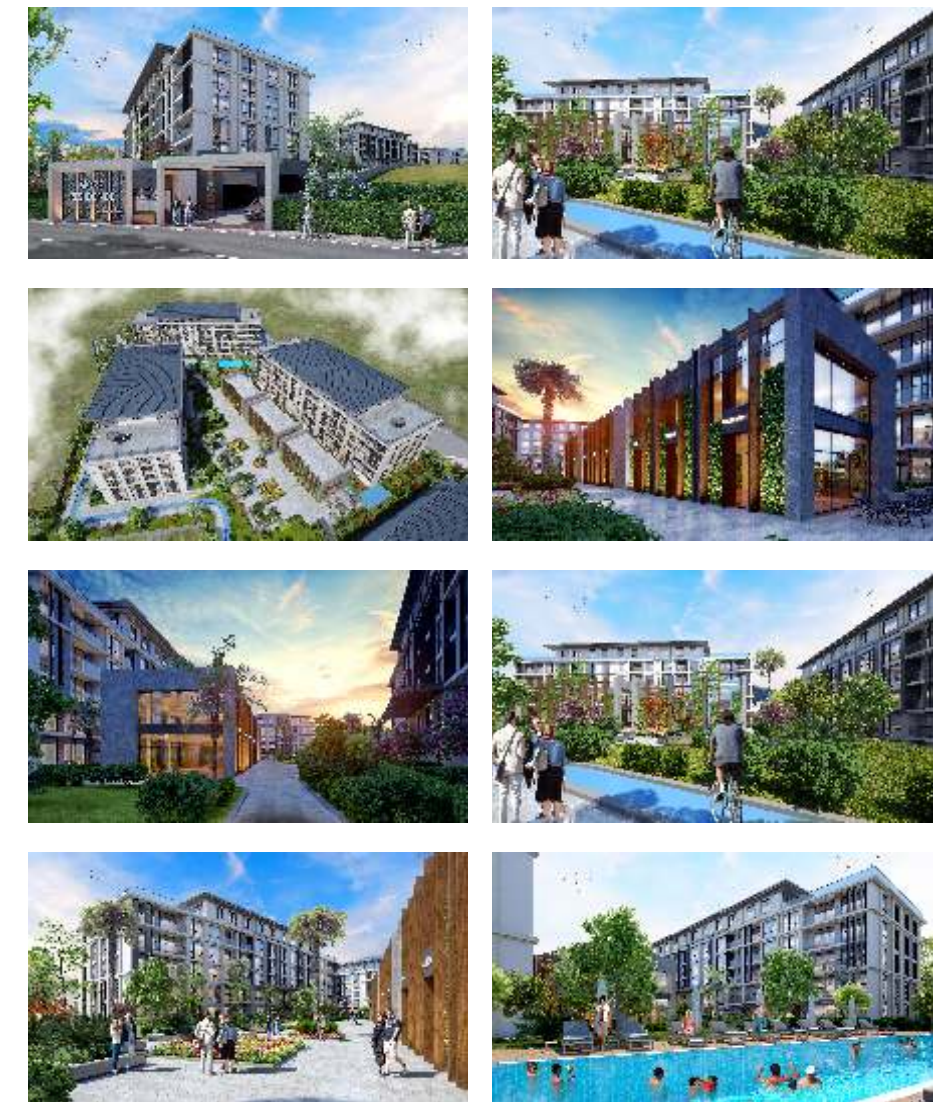
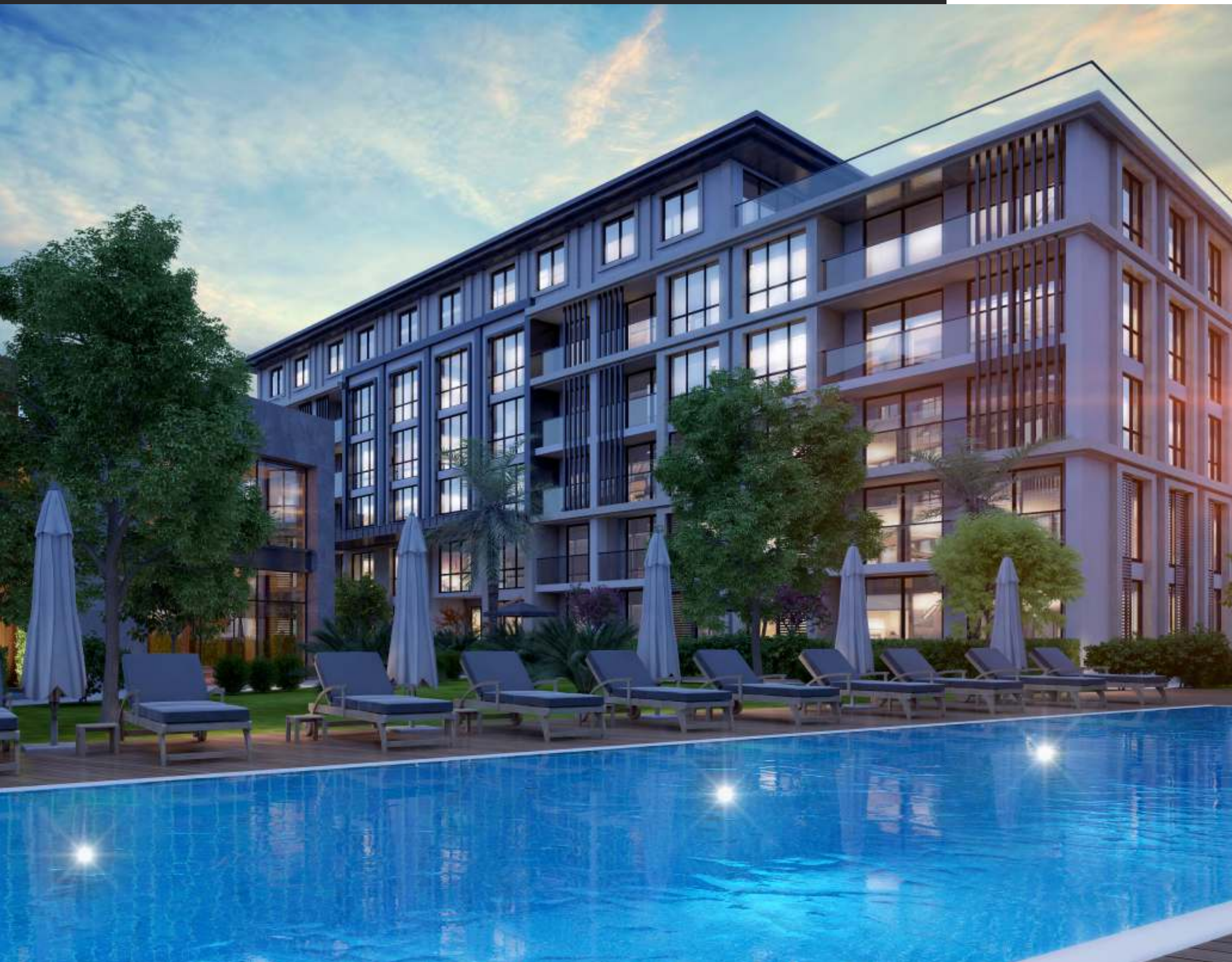
771 Apartments, Stores, Apart Hotel
Lefkoşa (Nicosia), North Cyprus
85.936,35 m²



RESIDENTIAL - MIXED-USE

MORA RESIDENCE

FITOUT | FF&E



Mora Residence

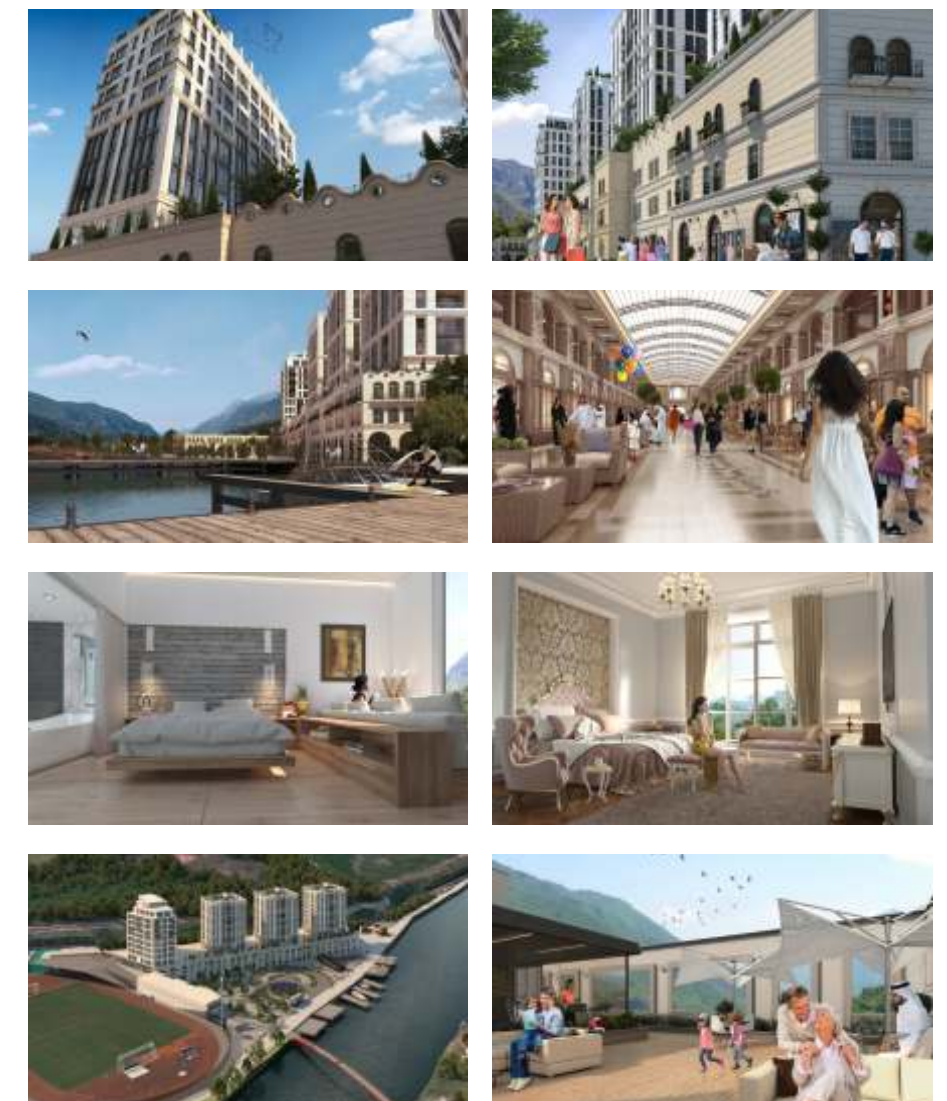
Apartments, Stores, Apart Hotel
Lefkoşa (Nicosia), North Cyprus



RESIDENTIAL - MIXED-USE

NERETVA RESIDENCE HOTEL & MALL

FITOUT | FF&E



Neretva Residence

Apartments, Shopping Malls (closed and open), 5 star Hotel
Konjic, Bosnia and Herzegovina
44.000 m²



RESIDENTIAL

KONJIC RESORT

CONSTRUCTION | FITOUT | FF&E



Konjic Resort

8 Luxury Villa, Terrace Houses, Apartment Building
 Konjic, Bosnia and Herzegovina
 10.900 m²



RESIDENTIAL - MIXED-USE

DEMA RESORT

CONSTRUCTION | FITOUT | FF&E



Dema Resort

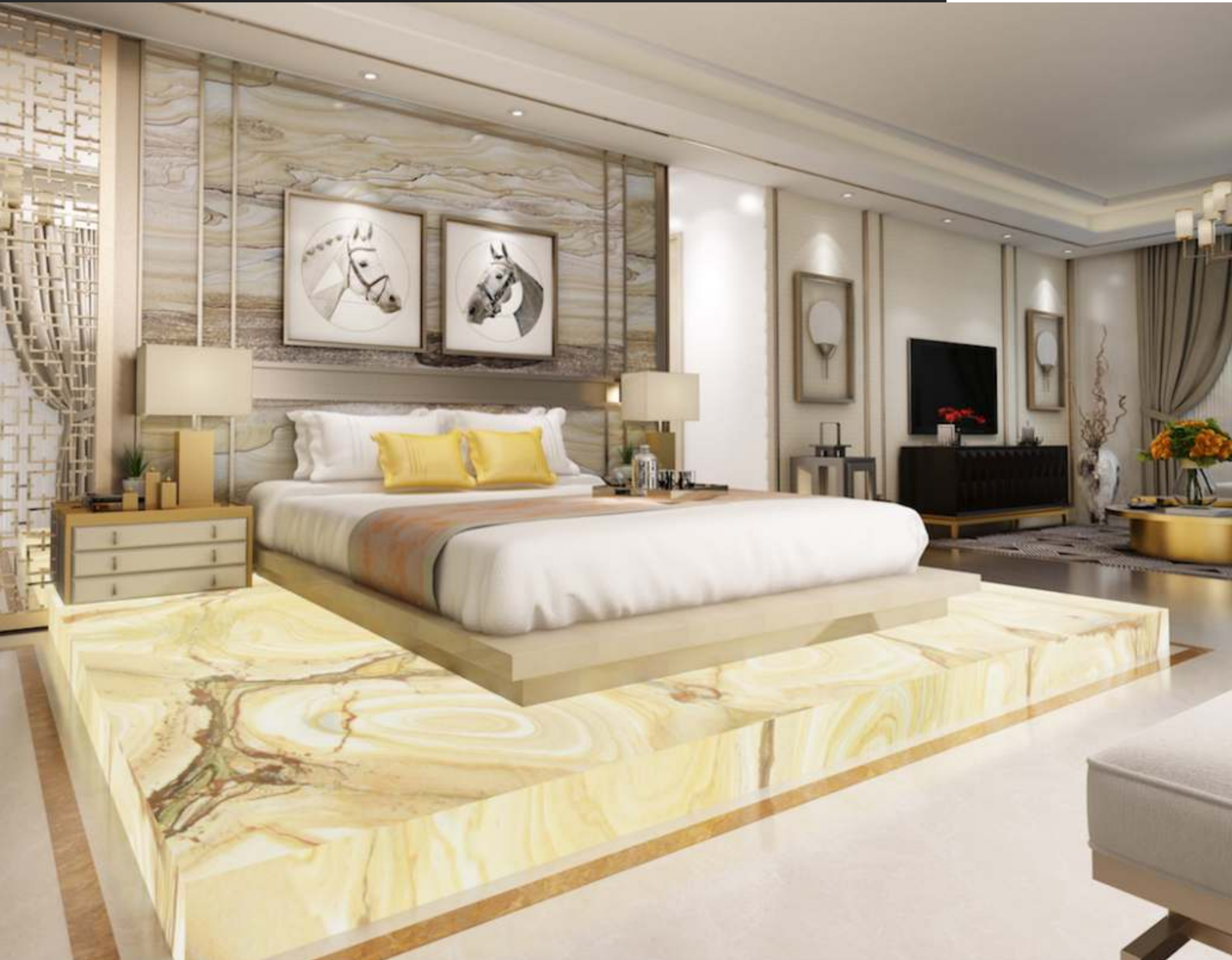
Mixed-use project: Villas, 5 star Hotel, Apart Hotel, apartment, social areas, facilities.
Sarajevo, Bosnia and Herzegovina
33.850 m²



RESIDENTIAL

JASMINE PALACE

CONSTRUCTION | FITOUT | FF&E



Jasmine Palace

2 Luxury Villa and landscaping
Sarajevo, Bosnia and Herzegovina
6.000 m²



RESIDENTIAL

THE NOUADHIBOU

FITOUT | FF&E



The Nouadhibou

Apartments and shops
Nouadhibou, Mauritania
3.782 m²



RESIDENTIAL

APARTMENT NOUADHIBOU

FITOUT | FF&E



Apartment Nouadhibou

Apartments
Nouadhibou, Mauritania
3.595 m²



RESIDENTIAL

SUIT DE MAGHRIB

FITOUT | FF&E



Suite de Maghrib

Mansion
Nouadhibou, Mauritania
2.394 m²



RESIDENTIAL
PALACE MVA

FITOUT | FF&E



Palace MVA

Palace
Nouadhibou, Mauritania
4.000 m²



RESIDENTIAL
VILLA M

FITOUT | FF&E



Villa M

Luxury Villa
Nouadhibou, Mauritania
1,325 m²



RESIDENTIAL - MIXED-USE

SKY SARAJEVO

FITOUT | FF&E



Sky Sarajevo



Mixed-use project: Villas, apartments, town houses, social areas, facilities.
Sarajevo, Bosnia and Herzegovina
62.000 m²



RESIDENTIAL

RESIDENCE DOUAOUDA

FITOUT | FF&E



Résidence Douaouda



Residences, facilities
Algeria
61.000 m²



RESIDENTIAL

RADAVA RESIDENCE

FITOUT | FF&E



Radava Residence

Residences and Apartments, Shopping
Konjic, Bosnia and Herzegovina
6.300 m²



RESIDENTIAL

TERRACE SARAJEVO

CONSTRUCTION | FITOUT | FF&E



Terrace Sarajevo

4 Luxury Villas
Sarajevo, Bosnia and Herzegovina
4.000 m²



RESIDENTIAL

KROMOLJ MANSION

FITOUT | FF&E



Kromolj Mansion

Luxury Villa (Mansion)
Sarajevo, Bosnia and Herzegovina



RESIDENTIAL

PRIVATE VILLA

FITOUT



Villa



Villa
Libreville, Gabon
650 m²

RESIDENTIAL

SOCIAL HOUSING

FITOUT



Algeria Social Housing



Residences, facilities
Algeria

RESIDENTIAL

KARANFIL GARDEN

CONSTRUCTION | FITOUT | FF&E



Karanfil Garden



5 Luxury Villas
Sarajevo, Bosnia and Herzegovina
10.000 m²

RESIDENTIAL

PRIVATE VILLA

FITOUT | FF&E



Villa



Private Villa
Nicosia, Turkish Republic of Northern Cyprus
2.000 m²

RESIDENTIAL

CHARBONAGE VILLA

CONSTRUCTION | FITOUT | FF&E



Charbonage (Oyubi) Villa



2 Luxury Villas
Libreville, Gabon
2.000 m²

RESIDENTIAL

LUI MANSION

CONSTRUCTION | FITOUT | FF&E



Lui (Liban) Mansion



Mansion (2 Luxury Villas)
Libreville, Gabon
1.500 m²

RESIDENTIAL

15 VILLAS

FITOUT | FF&E



Groupe Mayena



15 Luxury Villas
Libreville, Gabon
11.100 m²



RESIDENTIAL
E&F MANSION

FITOUT | FF&E



E&F Mansion

Luxury Villa (Mansion)
Libreville, Gabon
35.000 m²





REFERENCES
HOSPITALITY

HOSPITALITY

VERTIGINOUS TOWERS

FITOUT | FF&E



Vertiginous Towers

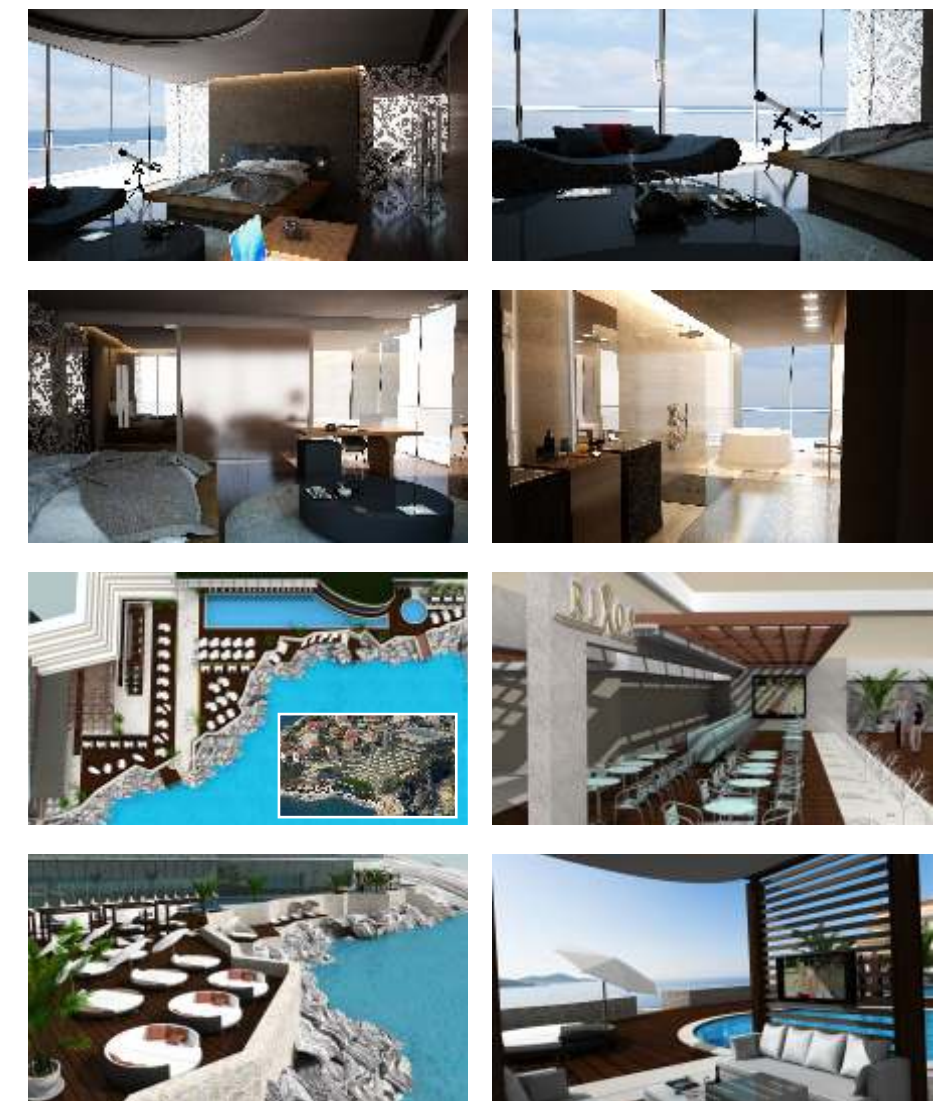
Hotel and facilities
Libreville, Gabon
175.000 m²



HOSPITALITY

RIXOS PREMIUM DUBROVNIK

FITOUT | FF&E



Rixos Premium Dubrovnik

King and suite hotel rooms, beach design
Dubrovnik, Croatia



HOSPITALITY

HOTEL ACON FLORYA

FITOUT | FF&E



Hotel Acon Florya

Hotel
İskele, North Cyprus
4.425 m²



HOSPITALITY

MOTEL ACON TATLISU

FITOUT | FF&E



Motel Acon Tatlısu

Boutique Hotel
Gazimağusa (Famagusta), North Cyprus
829 m²



HOSPITALITY

HOTEL MAURITANIA

FITOUT | FF&E



Hotel Mauritania

5 star Hotel
Nouadhibou, Mauritania
10.185 m²



HOSPITALITY

CYPRUS HOSPITALITY CENTER

FITOUT | FF&E



Cyprus Hospitality Center

Holiday resort
Girne (Kyrenia), North Cyprus



HOSPITALITY

IDD HOTEL



Libreville IDD Hotel

4 star Hotel
Libreville, Gabon
3.500 m²

FITOUT | FF&E



RESIDENTIAL

SKOLOVIC DORMITORY



Student Dormitory

Skolovic Kolonija Student Dormitory
Sarajevo, Bosnia and Herzegovina
2.500 m²

CONSTRUCTION

CONSTRUCTION | FITOUT | FF&E
SOLUTIONS

HOSPITALITY

HOTEL MOUROUDJ



FITOUT | FF&E



Hotel Mouroudj

5 star Hotel
Djelfa, Algeria
11.135 m²



ATILLA | ACON

HOSPITALITY

BUCHAREST DORMITORY

FITOUT | FF&E



Student Dormitory



Bucharest student dormitory
Bucharest, Romania
2.000 m²



HOSPITALITY

GONYELI DORMITORY

CONSTRUCTION



Student Dormitory



Gönyeli Student Dormitory
Nicosia, Turkish Republic of Northern Cyprus
5.700 m²



HOSPITALITY

CAMPING POTIGRAFU

CONSTRUCTION | FITOUT | FF&E

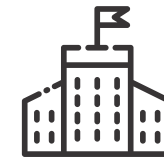


Camping Potigrafu



Holiday Village and Sport Centers
Prohova, Romania
45.000 m²





REFERENCES
COMMERCIAL

COMMERCIAL

KHR WORK CENTER

FITOUT | FF&E



KHR Work Center

Offices and shops
Libreville, Gabon
1.250 m²



COMMERCIAL

AZUR GSM HQ OFFICE

FITOUT



Azur GSM HQ

Headquarter office building
Libreville, Gabon
2.100 m²



COMMERCIAL

AZUR WAREHOUSE

CONSTRUCTION | FITOUT



Azur GSM Warehouse



Warehouse building
Libreville, Gabon
1.000 m²

COMMERCIAL

MOMBO'S RESTAURANT

FITOUT | FF&E



Mombo's Restaurant



Restaurant and facilities
Libreville, Gabon
1.250 m²

COMMERCIAL

BS GABON HQ

FITOUT | FF&E



BG Gabon



Headquarter office building
Libreville, Gabon
2.800 m²



COMMERCIAL

EGEMEN GROUP HQ

CONSTRUCTION | FITOUT | FF&E



Egemen Group HQ



Headquarter office building
Nicosia, Turkish Republic of Northern Cyprus
3.600 m²

COMMERCIAL

CONTINENTAL BANK HQ

FITOUT | FF&E



Continental Bank HQ



Headquarter office building
Nicosia, Turkish Republic of Northern Cyprus
2.100 m²

CONSTRUCTION | FITOUT | FF&E
SOLUTIONS

COMMERCIAL

TEKNOMEN SHOPS

CONSTRUCTION | FITOUT | FF&E



Teknomen Technology Markets



Nicosia, Kyrenia, Famagusta showrooms
Turkish Republic of Northern Cyprus
3.100 m²

COMMERCIAL

LC WAIKIKI

FITOUT | FF&E



LC Waikiki



Clothing Store
Gracanica, Bosnia and Herzegovina
950 m²



REFERENCES
EDUCATION AND
SPORT HALLS

EDUCATION

DRISTOR
HIGH SCHOOL

FITOUT | FF&E



HARBORS

DRISTOR HIGH SCHOOL

FITOUT | FF&E



Dristor High School

Campus and Sport Center
Bucharest, Romania



EDUCATION

BAHAR ACADEMY

FITOUT | FF&E



Bahar Academy

Education Center
Lefkoşa (Nicosia), North Cyprus
3.560 m²



EDUCATION

LICEUL CONSTANTA

CONSTRUCTION | FITOUT | FF&E



Liceul Constanta



High school building
Constanta, Romania

SPORT HALL

SCOALA SPECTRUM

CONSTRUCTION | FITOUT | FF&E



Scoala Spectrum



Sport Hall building
Constanta, Romania

SPORT HALL

BUCHAREST SCHOOL

CONSTRUCTION | FITOUT | FF&E



Bucharest High School



Open and closed sport fields and sport center building
Bucharest, Romania

SPORT HALL

BUCHAREST UNIVERSITY

CONSTRUCTION | FITOUT | FF&E



Bucharest University



Sport campus and sport center building, open and closed sport fields
Bucharest, Romania



REFERENCES
HARBORS
YACHT AND HARBORS
FISHERIES

HARBORS

AKPORT HARBOR

ENGINEERING DESIGN AND TECH. CONSULTING



Akport Harbor

Tekirdağ, Türkiye
Capacity (year): 5.500.000 Tones
71.750 m²



HARBORS

AKDENİZ KİMYA JETTY



Akdeniz Kimya Jetty



İzmir, Türkiye
Capacity (year): 300.000 Tones
65.000 m²



HARBORS

AKSA PORT



Aksa Port



Yalova, Türkiye
Capacity (year): 4.000.000 Tones
50.000 m²



HARBORS

POLİPORT HARBOR



Poliport Harbor



Kocaeli, Türkiye
Capacity (year): 1.500.000 Tones
112.000 m²



HARBORS

KARASU HARBOR



Karasu Harbor



Sakarya, Türkiye
200.000 m²



HARBORS

OMV POAS ALIAGA TERMINAL



OMV POAŞ Aliğa Terminal



İzmir, Türkiye
Fuel-oil & LGG Jetty Capacity (year): 400.000 Tones
200.000 m²



HARBORS

KEPEZ HARBOR



Kepez Harbor



Çanakkale, Türkiye
6.000 m²



HARBORS

PETROL OFISI DERINCE



Petrol Ofisi A.Ş. Derince Fuel-oil Jetty



Kocaeli, Türkiye
Capacity (year): 1.000.000 Tones
1.610 m²



HARBORS

GELIBOLU SHIPYARD



Gelibolu Shipyard



Çanakkale, Türkiye
Capacity (year): 15.000 DWT
8.000 m²



HARBORS

CEYHAN ENERGY TOWN



Ceyhan Energy Town Concept Project

Adana, Türkiye



HARBORS

GÜLLÜK BERTHING JETTY



Güllük Berthing Jetty

Muğla, Türkiye



HARBORS

SUGÖZÜ COAL



Sugözü Coal Imported Power Plant

İskenderun, Türkiye



HARBORS

PETROL OFISI HARAMIDERE



Petrol Ofisi A.Ş. Haramidere Bunker Platform

İstanbul, Türkiye





REFERENCES
OTHER

INFRASTRUCTURE

MINISTRY OF FOREIGN AFFAIRS



TRNC Ministry of Foreign Affairs



Infrastructure, fiber optic cabling laydown and
establishment of network system
Turkish Republic of Northern Cyprus

INFRASTRUCTURE

MINISTRY OF HEALTH



TRNC Ministry of Health



Infrastructure, fiber optic cabling laydown and
establishment of network system
Turkish Republic of Northern Cyprus

INFRASTRUCTURE

STATE HOSPITAL



Dr. Burhan Nalbantoğlu State Hospital



Infrastructure, fiber optic cabling laydown and
establishment of network system
Nicosia, Turkish Republic of Northern Cyprus

INFRASTRUCTURE

TRNC PRESIDENCY



TRNC Presidency



Infrastructure, fiber optic cabling laydown and application
Nicosia, Turkish Republic of Northern Cyprus

HANGARS

ALCARUMA AGRO

CONSTRUCTION | FITOUT



Alcaruma Agro



Farm hangars building
Giubega, Romania
30.000 m²



PORTS

LOAD PORT

CONSTRUCTION | FITOUT



Alcaruma Agro Port

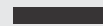


Load port
Turnu-Severin, Romania
5.000 m²



..... / /

ATILLA





ATİLLA
atilla.co